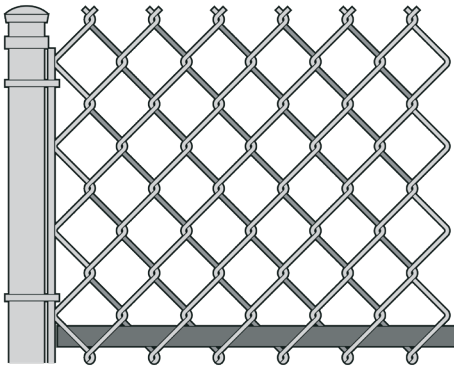


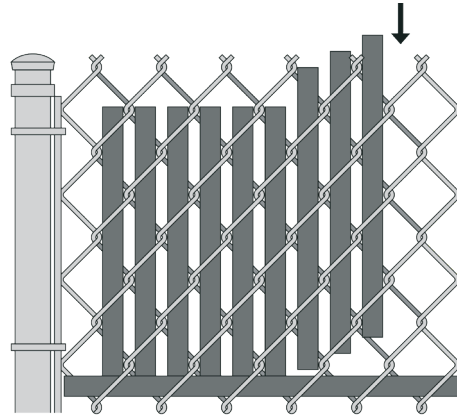
Bottom Locking Fence Slats

INSTALLATION INSTRUCTIONS

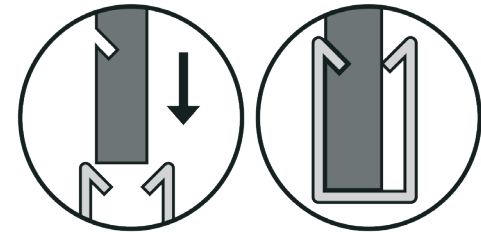
(Suggested installation instructions. Instructions vary per job site conditions)



Step 1. Insert the bottom channel horizontally into the first diamond at the bottom of the fence with open side facing up.

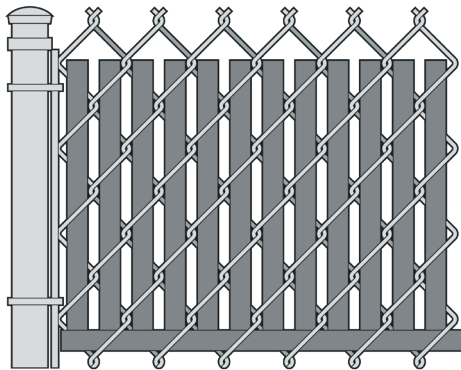


Step 2. Insert slats vertically with the beveled/notched end downward until slat engages and interlocks with the bottom channel.



Step 3. Push the vertical slat into the horizontal channel until the locking catch snaps into the cutout notch.

COMPLETED FENCE



These easy to install slats provide a beautifully finished fence.

BOTTOM LOCKING SLAT SPECIFICATIONS

SLAT NAME	SLAT WIDTH	MESH SIZE	WIRE GAUGE	COVERAGE AREA
BOTTOM LOCK 2"	1 3/32"	2"	9 OR 11	10 LINEAR FEET
BOTTOM LOCK 2 1/4"	1 1/4"	2 1/4"	11 1/2 OR 12	10 LINEAR FEET